

INTRODUCTION

This Worker Environmental Awareness Program (WEAP) training brochure was prepared as a general overview of the environmental requirements for construction personnel on the project. It is **not** intended as a comprehensive list of environmental requirements and mitigation measures and is **not** a substitute for contract documents or permits. Copies of the Final Environmental Impact Report and Mitigation Monitoring and Reporting Program are available in the onsite trailer or from the Environmental Inspector/Biologist.

Cultural Resources

Cultural resources are protected by federal, state, and local laws. Penalties, including fines and imprisonment, can occur for intentionally disturbing or collecting resources in the event of an unanticipated discovery. Cultural resources can be in the form of prehistoric or historic resources:

Prehistoric Resources

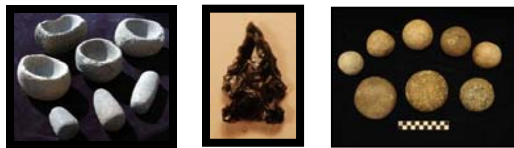
- Human remains and animal bones
- Artifacts such as marine shells, arrowheads, pottery, stone tools or stone flakes, mortars, pestles, and evidence of fire (ash deposits, charcoal, etc.)

Historic Resources

- Structural remains (foundations, walls, footings, etc.)
- Manufactured materials (cans, glass bottles, hardware, broken dishes) and trash pits, privies, or wells

If a cultural resources discovery occurs, the following procedures shall be implemented:

- Immediately halt or redirect all work within 50 feet of the discovery (100 feet for human remains)
- Mark the buffer's perimeter with flagging and signage
- Do not touch, move, or disturb the discovery
- Immediately contact the Environmental Inspector, onsite Archaeological Monitor, or Environmental Compliance Supervisor if monitors are not onsite
- Work may not resume without approval from the CPUC and NEET West's Cultural Resources Lead



Full-time archaeological monitors and Native American monitors are required for all initial ground disturbing activities

CONTACTS

Marcos Mora NEET West Project Manager (561) 691-2162	John Bulich NEET West Project Engineer (561) 304-5632
Andy Flajole NEET West Permitting Lead (561) 568-6553	Adrienne Charbonneau NEET West Compliance Lead (850) 445-7015
Lincoln Allen Env. Compliance Supervisor (415) 500-5605	Mandi Martinez Cultural Resources Lead (575) 644-4292
TBD Env. Inspector/ Biologist [PHONE NUMBER]	Pauline Roberts Biological Resources Lead (603) 566-9533

THE BASICS

- Ensure that all project personnel receive Environmental Awareness Training **prior** to beginning work onsite
- Park vehicles only in designated locations and always remain within approved work areas
- Minimize vehicle idling times by shutting equipment/vehicles off when not in use or reducing the maximum idling time to five minutes
- Secure trash and debris in animal-proof containers before the end of each work day. Empty containers at least weekly and dispose of waste at an appropriate off-site location
- Do not smoke unless inside the cab of vehicles or in designated staging areas devoid of vegetation. Properly dispose of cigarette butts
- Watch for and follow signs installed by environmental inspectors and monitors
- Be courteous to landowners and the public. Direct questions and concerns to the designated public liaison

Best Management Practices

- Install erosion and sediment control measures in accordance with the project's SWPPP
- Clean construction equipment before it arrives to prevent the spread of noxious weeds
- Stabilize work areas to minimize fugitive dust by using water or a non-toxic chemical stabilizer/dust suppressant
- Inspect vehicles/equipment daily for leaks
- Follow manufacturer's recommendations for the use, storage, and disposal of chemicals
- Immediately report **all** spills and contaminated soil to the Environmental Inspector/Biologist

ENVIRONMENTAL TRAINING

Suncrest Dynamic Reactive Power Support Project



San Diego County, California

Construction 2019



BIOLOGICAL RESOURCES MITIGATION SUMMARY

- Do not handle any wildlife and immediately report observations of injured or dead wildlife, sensitive species (see below), nests, dens, and burrows to the Environmental Inspector/Biologist
- Keep out of exclusion areas, including avoidance buffers for nesting birds, special-status plants, and Engelmann oak trees. Follow all posted signage
- Coordinate with the Environmental Inspector/Biologist to ensure they are onsite to conduct surveys and/or monitoring as necessary prior to starting work
- Limit vehicle speeds to 15 mph and turnaround only in designated areas
- Do not, for any reason, feed wildlife
- Pets and firearms are prohibited within the project area
- Limit refueling and maintenance of vehicles and other construction equipment to designated staging areas
- Backfill or fully cover trenches/excavations at the end of each day. Alternatively, escape ramps (10 inches wide that extend to the bottom of the excavation) can be provided for open excavations
- Avoid placing materials, equipment, or stockpiles within a tree dripline
- Parking is restricted to paved or graveled surfaces
- Always notify the environmental team prior to performing tree trimming activities
- Ensure that vehicles and equipment arrive to the project in good working order and leak-free condition
- If night work is required, all lighting must be shielded and pointed downward/away from any identified biological resources or habitat areas
- Equipment must remain within the designated project boundaries. New surveys will be needed for work areas not previously evaluated
- Carry fire suppression equipment on all vehicles



Felt Leaved Monardella

(Monardella hypoleuca ssp. lanata)

Status: California Rare Plant Rank 1B.2

Habitat: Occurs in chaparral and oak woodland.



Nesting Birds

Status: Covered under the Migratory Bird Treaty Act

Habitat: Nest in multiple substrates including trees, buildings, cavities, shrubs, and bare ground



San Diego County Sunflower

(Bahioopsis laciniata)

Status: California Rare Plant Rank 1B.3

Habitat: Occurs in chaparral and coastal sage scrub

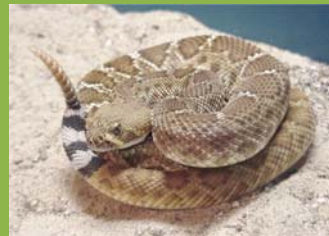


Engelmann Oak

(Quercus engelmannii)

Status: Federally and State Threatened

Habitat: Found in annual grasslands including remnant tracts within developed areas. Occupies cavities in the ground



General Wildlife

- Do not handle any wildlife found in the project area
- Intentionally harming or killing any wildlife, including snakes and rodents, without a license or permit is a violation of California law



Nocturnal Wildlife

- Minimize construction night lighting and direct light downwards
- Keep vehicle traffic and speed to 15 mph to avoid wildlife mortality